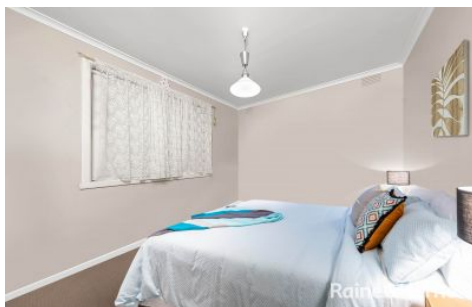


Redrok.



29 Helpmann Crescent EPPING VIC

3  2  2 

(Please Note: Inspections by appointment only. No entry permitted without prior appointment)

This immaculately presented home located in the heart of Epping will grab your attention the moment you step foot into the property.

Upon entry be impressed with the spacious lounge, updated central kitchen including quality appliances & dishwasher with meals area, separate indoor bbq area/rumpus, updated main family bathroom, updated ensuite to the main bedroom & WIRs.

Further features are heating and cooling throughout, dishwasher, fans, GPS monitor security, massive laundry, pergola and huge backyard.

Land Size : 606 sqm

View : <https://www.redrok.com.au/sale/vic/north/epping/residential/house/7234742>



Yash Ghedia
03 9462 1100

<https://www.redrok.com.au>