



16 Winterton Close EPPING VIC

3 1 2

This charming three-bedroom abode is ideal for busy families looking for a low-maintenance lifestyle. With plenty of scopes to add your own style and flair or for savvy investors to enjoy a set-and-forget addition to their portfolio, this versatile property will suit a wide variety of needs.

This cozy home consists of 3 good size bedrooms, all with built-in robes, a generous size lounge and a dining area, leading to a functional kitchen and meals area that overlooks a large outdoor area, great for recreational activities and entertainment. Ducted heating, Aircon, solar system and outdoor automated shutters are keys features to this property.

Whether you renovate, secure it as an investment property or develop it S.T.C approval you can rest assured this is a solid investment for the current and long term future.

Rental Return \$400-\$420week

Set on a generous 664sqm block, this smart buy is located

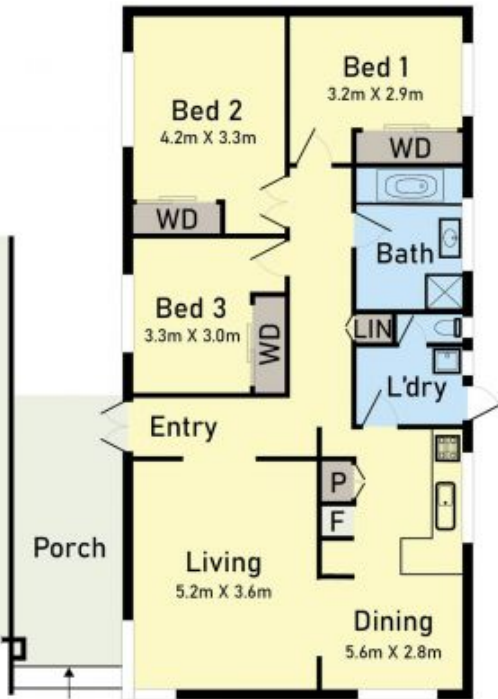
Land Size : 664 sqm

View : <https://www.redrok.com.au/sale/vic/north/ep-ping/residential/house/7234752>

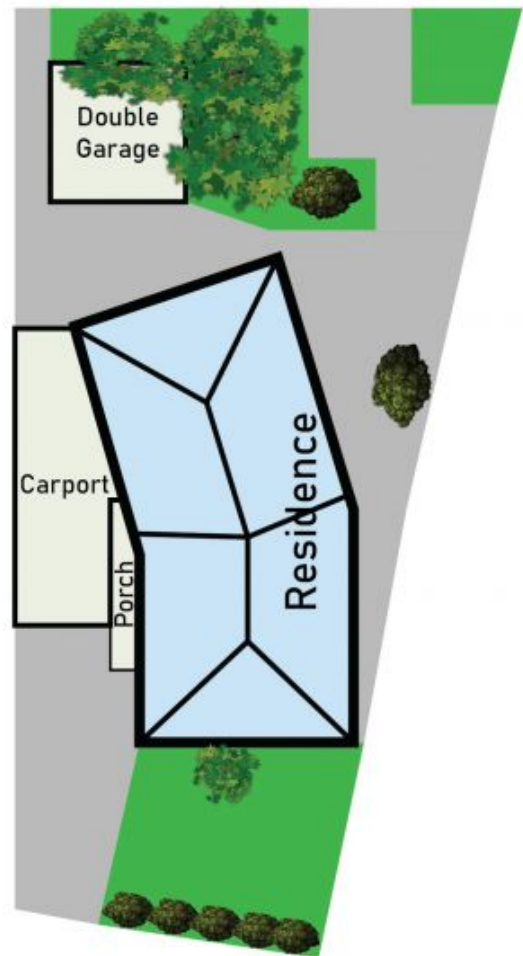


Robbie Singh
03 9462 1100

Floor Plan



Site Plan



16 Winterton Close, Epping

* Dimensions are approximate and for illustrative purposes only