



## 35 Smile Crescent WYNDHAM VALE VIC

4 2 2

Cleverly designed for everyday comfort. This is a home that will be enjoyed by the whole family.

This perfectly maintained residence is sure to suit many first home buyers & investors. Located in the sought-after Jubilee Estate, a fast-growing pocket of Wyndham Vale and surrounded by all the amenities.

Close to Wyndham Vale station, Manor Lakes shopping centre, schools, parklands and much more!

Property Features included:-

Master bedroom with walk in robe and full en-suite.

3 other Bedrooms with built in robes

Formal Lounge

Double garage with internal access.

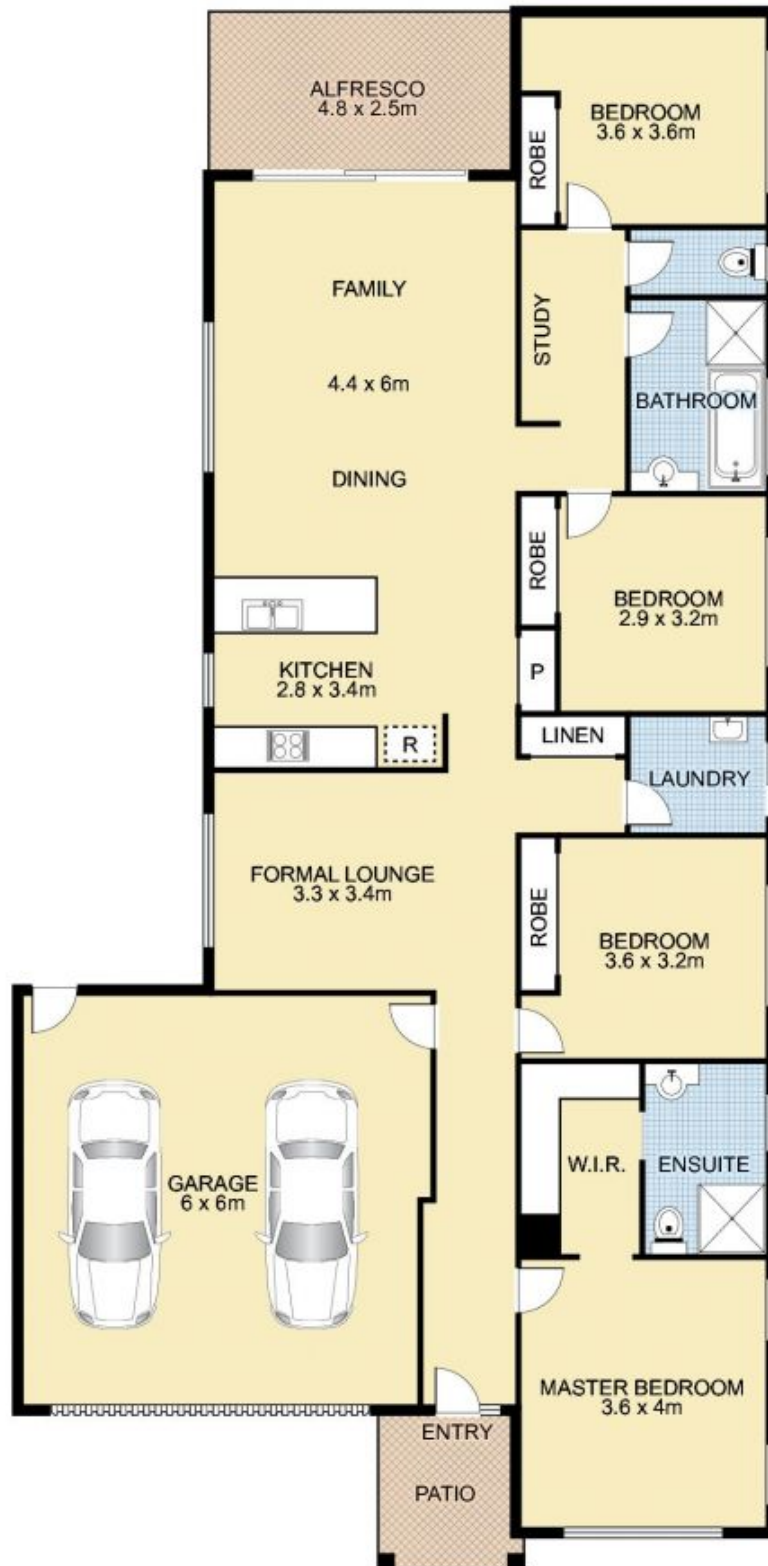
Stunning kitchen with abundance of cupboard space and

**Land Size** : 423 sqm

**View** : <https://www.redrok.com.au/sale/vic/west/wyndham-vale/residential/house/7234782>



**Yash Ghedia**  
**03 9462 1100**



## 35 Smile Crescent, WYNDHAM VALE



This floor plan is intended as a guide only. Layout dimensions are approximate only. No representations or warranties of any nature whatsoever are given or intended. Any person using this information should rely on their own enquiries. Floor Plans by SURROUNDPIX.