

# Redrok.



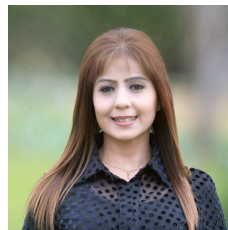
## 242 Mandalay Circuit Beveridge VIC

4  2  2 

An attractive façade, flowing floor plan, fabulous entertaining zones and impeccable garden surrounds, illustrate the allure of this tantalising home, delivering a ready-to-enjoy lifestyle. Set on an impressive 575m<sup>2</sup>, the homes stylish interior perfectly integrates the stunning outdoors to provide the ultimate indulgence in family living.

The heart of the home is the open plan kitchen, meals and family room that is filled with loads of natural light that seamlessly opens up through stacker doors to the entertaining area and manicured backyard. Further complementing the homes functional design is the separate games room that is the ideal kids retreat/entertainer room, the fully equipped kitchen that boasts an envious walk-in butler's pantry and sizeable island bench. The sleeping quarters include three spacious robed bedrooms serviced by a main bathroom with free standing tub, a grand master

**Price** : \$ 770,000  
**Land Size** : 575 sqm  
**View** : <https://www.redrok.com.au/sale/vic/north/beveridge/residential/house/7424030>



**Chantelle Bajwa**  
03 9462 1100



**Robbie Singh**  
03 9462 1100

<https://www.redrok.com.au>



## 242 Mandalay Cct, Beveridge

\* Dimensions are approximate and for illustrative purposes only

